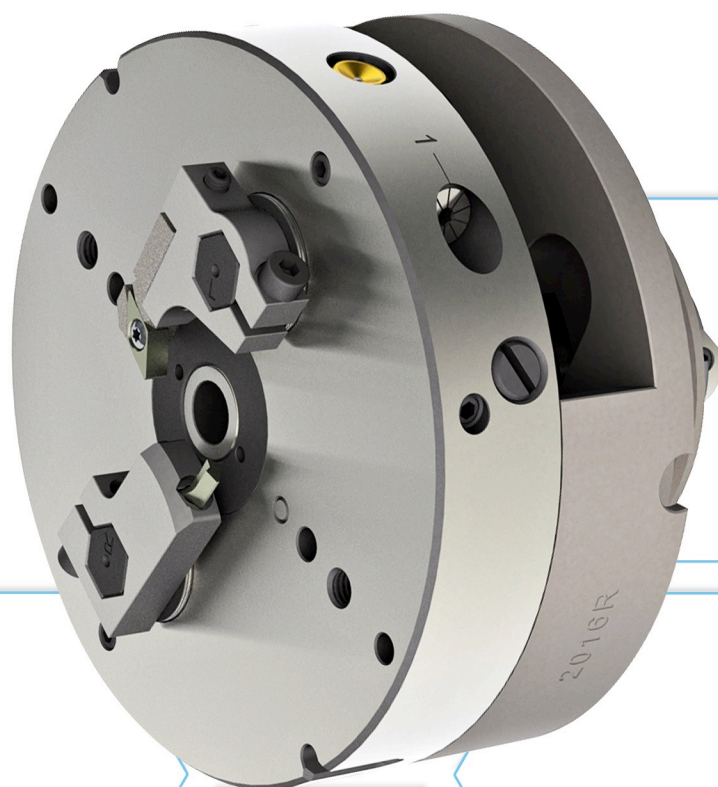




VENTURA[®]

TECHNOLOGIES

TOOL-HEAD WITH HEXAGONAL AXES FOR REMOVABLE INSERTABLE-FORM TIP-HOLDERS

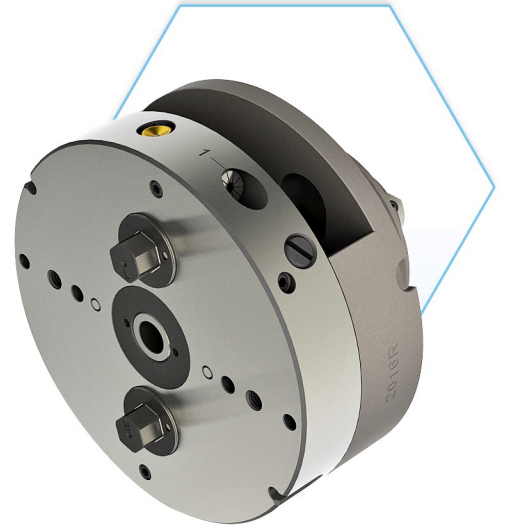


Tool-head with hexagonal axes for Escomatic® and Ventura® automatic lathes

This tool-head for the ESCOMATIC® D2, D4 D5 and Ventura® V2, V4, V5 automatic lathes have hexagonal axes that can be equipped with various removable tool holders.

This system allows an easy and rapid change of tool-head equipment.

Your current tool-head can be turned by us into a tool-head with hexagonal tool-holder.



We have three types of tool carriers:

A "Classic" tool holder for the use of triangular D2 cutting-tools

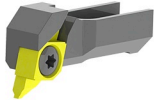
Two knurling-wheels holders:

- For knurl up to 12 mm
- For knurl from 12 mm to 15 mm

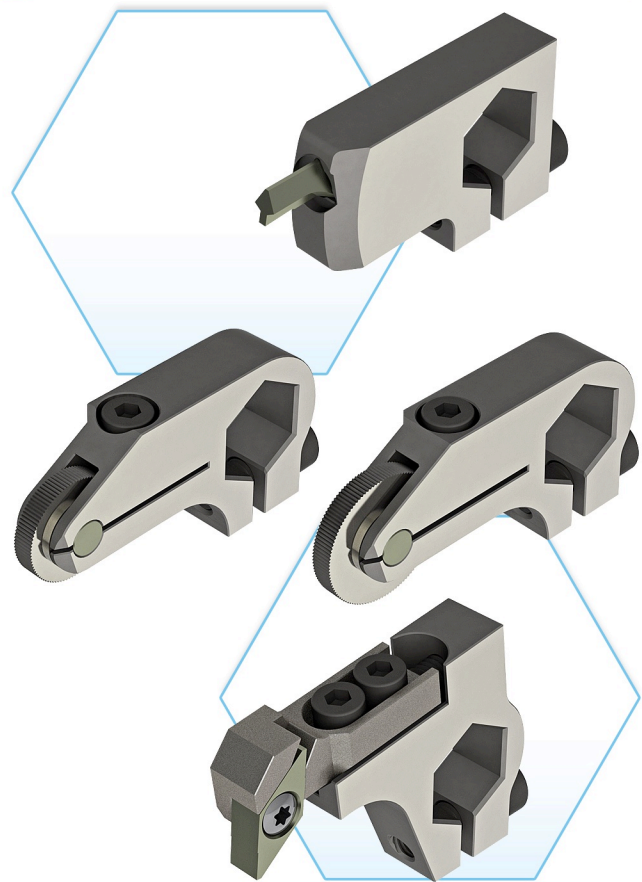
And, "NEW," a tool-holder for removable form tips

As these tips have two cutting positions, their lifespan is therefore doubled compared to conventional triangular inserts.

Form tips and tips holder



Another advantage is that they are standard and supply time is very short.



This hexagonal axis system is also adaptable on your HW 10,000 rpm or HW 12,000 rpm tool-head

