

VENTURA®

V2 SOFTCAM CNC On Escomatic® D2 base

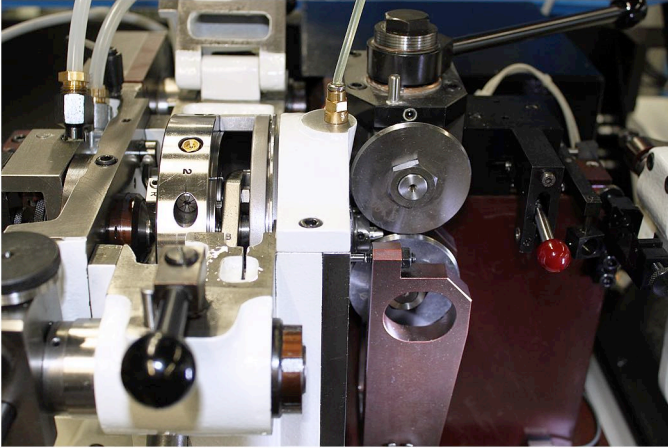
Unequalled productivity and flexibility thanks to the virtual cams



**Transform outdated machinery
and increase Productivity !**



V2 SOFTCAM CNC



New SoftCam CN tools-control

SOFTCAM CN ADVANTAGES

- Considerable increase of the machine performance thanks to the virtual cams.
- Menu guided programming / set-up and quick process adaption.
- Escomatic® standard turning tools can be used.
- Turning without form tools is possible.
- Tool-head speed up to 10'000 RPM.
- Turning speeds, feed rates and cutting speeds are freely programmable.
- All sets of tools for older D2/D4/D5 escomatic® machines compatible with **V2 SOFTCAM CN, including the tool-heads.**
- Significant improvement in quality of parts produced (in obtaining tolerances and in surface finish).

ACCESSOIRES

- **Tool head** : 10,000 or 12,000 r.p.m. tool head, instead of traditional tool head where cutters rotate at speeds of up to 8,000 r.p.m.
- **Mobile counter-collet attachment (PM)**
- **Constant threading of the stock (D2/D5):** This unit is mounted between the straightener and the feeding device. It threads the material continuously while the parts are machined (D2-43).

- **End-working milling (D2)** : The standard counter collet can be accommodated with an end-working milling attachment (D2-PMF).
- **Overlapped accurate knurling operations (D2)** : An accurate knurling device is available and mounted in line with the counter collet. Controlled with a hydraulic system reaching up to 2.8 tons pressure, this unit is designed for accurate knurling and thread rolling operations, which are overlapped with the turning operations (D2-47).

TECHNICAL DATA

Turning :

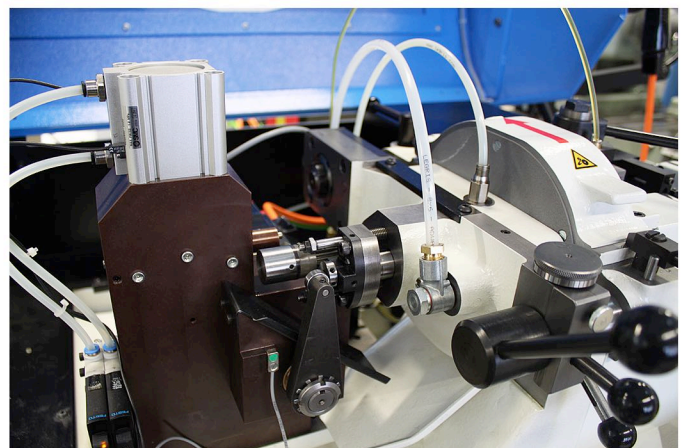
- **Part diameter** : 0,3 to 5 mm
- **Number of cutting tools** : 2
- **Max. tool-head speed** : 12'000 r.p.m.
(if equipped with high speed tool head)
- **Material feed rate (Z1)** : 9 m/min.

Straightening :

- **Straightening length** : 70 mm
- **Straightening speed** : 36 min-1
- **Rotation speed of straightening unit** : 600-3400 min-1

GENERAL SPECIFICATIONS

- **Coolant** : Neat oil
- **Weight** : 1050 kg
- **Size (LxW)** : 1560x1000 mm



Mobile counter-collet attachment



NEXT GENERATION CONTROL

Our Next Generation Control (NGC) is the latest update to the machine tool industry's most user-friendly CNC control. We have significantly improved the user interface, with a more consistent and intuitive navigation experience, vastly improved connectivity, and an all-new Visual Programming System.

The CNC control allows for flexible and optimized manufacturing of turned parts without cycle time loss. The advantages of cam driven machines are maintained. The very simple programming system which is based on the experience of operators allows all operators to learn to operate and program the machine within a few hours.

V-CONNECT

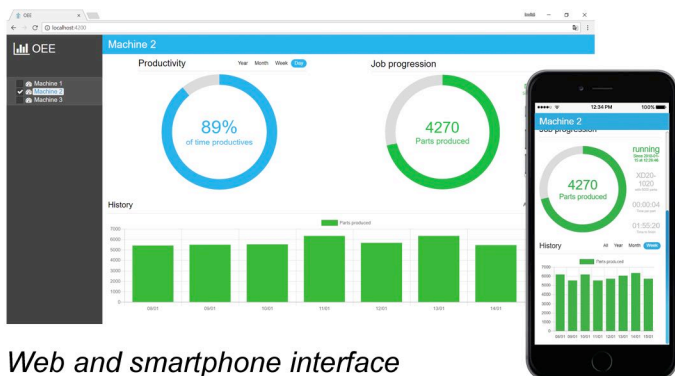
The Next Generation Control has the ability to send you, and others you designate, Email and SMS text notifications about the operating status of your machine. Set up is simple. V-Connect is available with every new Ventura@ machine that has the Next Generation Control.

Monitoring with V-Connect :

- View of complete machine fleet according to the machine type with the possibility to sort the displays :
 - *Machine status (machine lamp copy).*
 - *Machines at end of production.*
- View of production in progress for each machine :
 - *Part counter, remaining production time and part name.*
 - *Alarms and/or active messages.*
 - *Statistics (Productivity...).*

FEATURES

- Proven escomatic technology with menu guided CNC control system.
- Parts with very high production and small batches.
- Turning operations with two cutting tools.
- Simple, precise parts.
- Fast cycles and short machining times enhanced precision.
- Best price / performance ratio for the production of parts with small diameters.
- Reduction of labour costs due to fewer machine stops by using material from coil, real 24h operation.
- Economy of floor space due to compact design of the unit.
- Easy and simple set up and operation due to the absence of cams.



Web and smartphone interface



SWISS-TYPE MACHINES




Sales representation



VENTURA MECANICS SA
Rue du Verger 9
CH 2014 Bôle

 +41 32 855 25 10

 +41 32 855 25 13

 ventura-sa.com